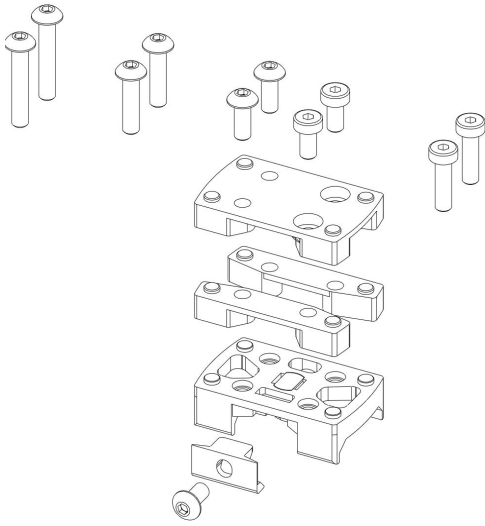




## MOUNT INSTRUCTIONS FOR SMS/RMS PICATINNY

### Exploded Diagram / Kit List



Remove slide plate as per manufactures instructions.

- 1 - Fit the selected amount of spacers to the mount.
- 2 - Screw spacers to mount with correct length screws and recommended torque settings
- 3 - Screw sight to mount with correct length screws and recommended torque settings
- 4 - Place on desired location on the picatinny rail, attach the grip plate and screw in place using recommended torque settings.

## IMPORTANT!!

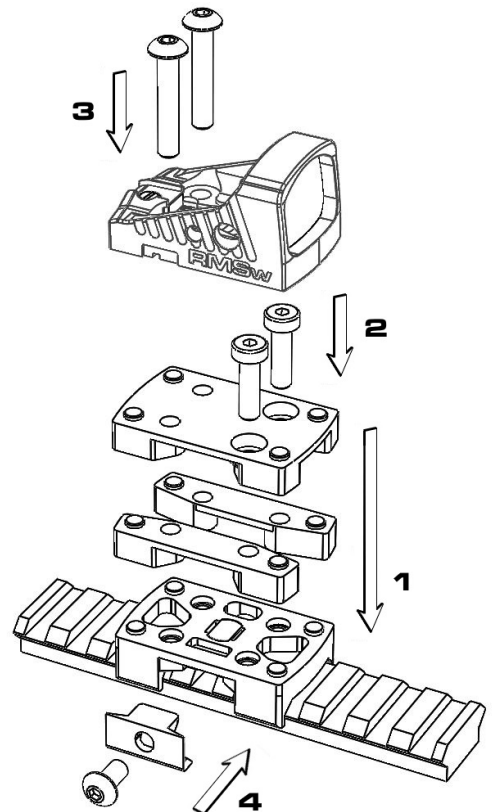
PLEASE ENSURE ALL FIREARMS ARE CLEAR AND  
SAFE BEFORE CONTINUING

It is recommended that a medium strength thread lock (*such as Loctite 243 or 248*) is used on all fixing screws and sufficient drying time is allowed before zeroing the sight.

Recommended screw torques:

M3 Screw Torque - 0.8nm  
m4 Screw Torque - 2nm

When multiple screw choices are available (*such as spacer mounts*) ensure correct length screw is used & has a minimum of 3mm engagement.

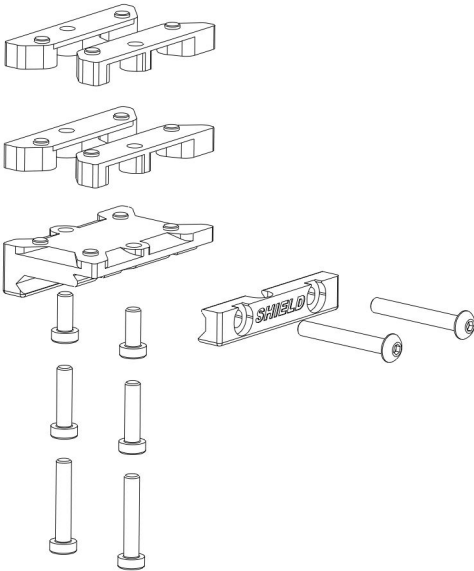


ENSURE THAT YOU KEEP TOOLS SAFE FOR FUTURE USE



## MOUNT INSTRUCTIONS FOR SIS to PICATINNY

### Exploded Diagram / Kit List



Remove slide plate as per manufactures instructions.

- 1 - Fit the selected amount of spacers to the sight.
- 2 - Screw spacers to sight with correct length screws and recommended torque settings
- 3 - Place on desired location on the picatinny rail.
- 4- Attach the grip plate and screw in place using recommended torque settings.

## IMPORTANT!!

PLEASE ENSURE ALL FIREARMS ARE CLEAR AND SAFE BEFORE CONTINUING

It is recommended that a medium strength thread lock (*such as Loctite 243 or 248*) is used on all fixing screws and sufficient drying time is allowed before zeroing the sight.

Recommended screw torques:

M3 Screw Torque - 0.8nm  
m4 Screw Torque - 2nm

When multiple screw choices are available (*such as spacer mounts*) ensure correct length screw is used & has a minimum of 3mm engagement.

